

INTELLISTRIPE 380

SPECIFICATIONS

MAGNETICS

Tracks 1, 2 & 3, HiCo/LoCo Read/Write per ISO 7810, 7811

SMART CARD

T=0, T=1 smart card per ISO 7816 and EMV Level 1

Memory cards: SLE 4442, SLE 4432, SLE 4428, SLE 4418

TRANSPORT SPEED

10 i.p.s. ± 20% (normal)

MAIN INTERFACE

RS-232, 9600 baud -115Kbaud

ENVIRONMENTAL

TEMPERATURE

Operating: 32°F to 122°F (0°C to 50°C)
Storage: -40°F to 158°F (-40°C to 70°C)

AGENCY APPROVALS

UL/CRU
CE Class B
FCC Class B
EMV Level 1 approved

AUXILIARY INTERFACE

RS-232, 9600 baud -115Kbaud

INPUT VOLTAGE

+12VDC ±5%

CURRENT DRAW

Idle: 170 ma or less
Max: 3.0 A (during HiCo encode sequence)

COMM PROTOCOL

MagTek MCP protocol

COMMAND SET

MagTek MCP command set

HUMIDITY

Operating: 5% to 95% non-condensing
Storage: 5% to 95% non-condensing

MTBF

Electronics: 125,000 hours
Magnetic Read Head: 1 million passes (500,000 insertion cycles)
Smart card Contacts: 1 million transactions

MECHANICAL

Length: 7.75" (19.69 cm)
Width: 4.45" (11.303 cm)
Height: 3.80" (9.652 cm)

WEIGHT

Est: 2.5 lbs (40 oz)

ALTITUDE

Operating: 0 to 10,000 ft (0 to 3,048m)
Storage: 0 to 10,000 ft (0 to 3,048m)

MagTek

20725 S. Annalee Ave.
Carson, CA 90746
p 310.631.8602
f 310.631.3956
www.magtek.com
888.624.8350

MAGTEK IS AN ISO 9001 COMPANY



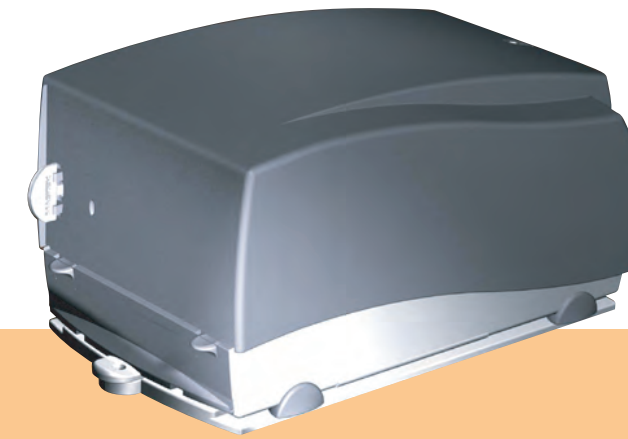
MAGNETIC STRIPE READING & ENCODING

- ▶ SUPPORTS HICO & LOCO CARDS
- ▶ JIS
- ▶ DRIVERS LICENSE
- ▶ CUSTOM FORMAT ENCODE SCHEMES

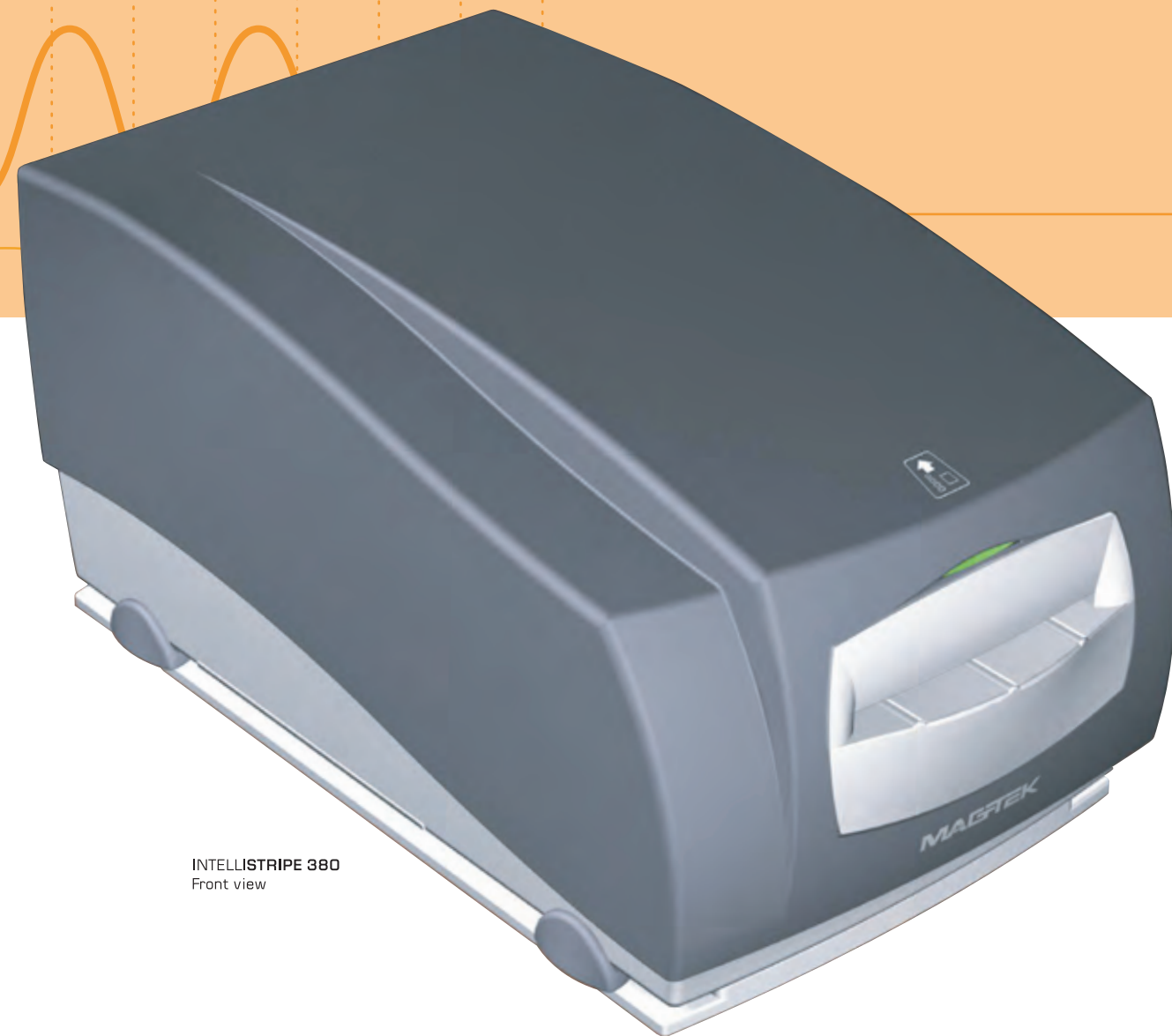
SMART CARD

- ▶ EMV T=0, T=1 SMART CARD INTERFACE
- ▶ POPULAR MEMORY CARDS
- ▶ SINGLE ON-BOARD SAM SOCKET
- ▶ OPTIONAL SUPPORT FOR 6-SOCKET SAM RANCH, VIA A PIGGY-BACK PCB

INTELLISTRIPE 380
Rear view



READ AND ENCODE
MAGNETIC STRIPE AND SMART CARDS



INTELLISTRIPE 380
Front view

FEATURES

- ▶ EMV Level 1 certified
- ▶ RS-232 primary host interface using MCP protocol
- ▶ Auxiliary RS-232 interface to support an external PINPad interface
- ▶ Flash programmable
- ▶ Dual color LED status indicator
- ▶ Remote power pack